

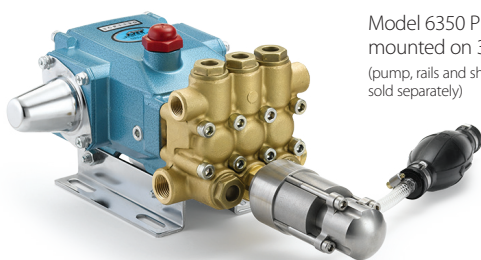
CHEMICAL INJECTION PULSE PUMPS



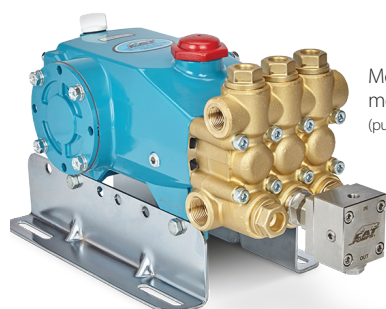
Pulse Pumps

Harsh chemicals can damage the inner components of a high-pressure pump if run through the main pumping chamber. Pulse pumps from Cat Pumps are a cost-effective solution to bypass the primary pump, injecting these solutions down-stream and preventing premature wear on parts. This allows users to run standard high-pressure pumps instead of special, more costly stainless steel pumps with chemical-resistant seals.

The same proven quality and attention to detail that customers have come to expect from Cat Pumps is built into every pulse pump chemical injector. With pressures up to 207 bar (3,000 psi) and injection rates up to 12 gph, these pulse pumps can be used on a wide variety of new or existing systems. The installation process is so simple that pumps can be retrofitted quickly in the field.



Model 6350 Pulse Pump mounted on 3CP1120 (pump, rails and shaft protector sold separately)



Model 6340 Pulse Pump mounted on 7CP6110CS (pump and rails sold separately)

Features

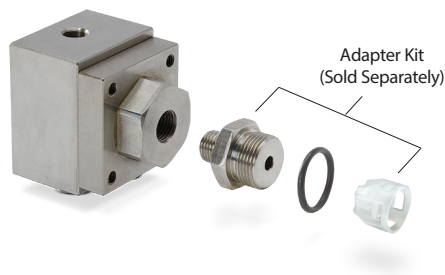
- Long lasting and simple to service
- Can be used with a wide range of high-pressure pumps, from small direct-drive to large belt-driven pumps.
- Easy to retrofit in the field
- Accurate and easy to control injection rates
- Two pulse pumps can be used on one high-pressure pump to double chemical injection rate or use two separate chemicals
- Chemical pump can be turned on and off independently from main system

Typical Applications

- Sanitizing / Disinfecting
- Pressure Wash
- Truck Mount
- Vehicle and Equipment Wash
- Surface Cleaning

Pulse Pump Specifications

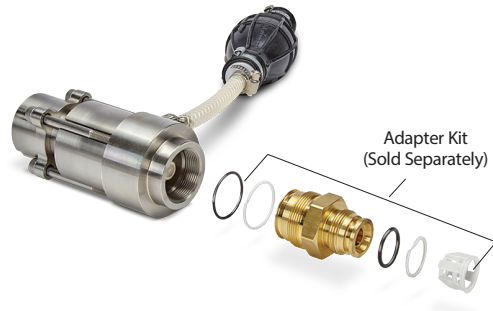
6340 & 6341



SPECIFICATIONS	U.S. MEASURE	METRIC MEASURE
Pressure Range	100 – 2000 psi	6.9 – 138 bar
Maximum Injection Rate	10.5 gph	39.7 lph
RPM Range	1000 – 1800 rpm	1000 – 1800 rpm
Maximum Liquid Temp.	130°F	54°C
Inlet Port (1)	1/8" NPT(F)	1/8" NPT(F)
Discharge Port (1)	1/8" NPT(F)	1/8" NPT(F)
Adapter Port (1)	1/4" NPT(F)	1/4" NPT(F)
Weight	2.1 lbs.	0.95 kg
Dimensions	2.4 x 2 x 2.7"	61 x 51 x 68 mm

Note: Maximum inlet pressure for drive pump is 5 psi

6350 & 6351



SPECIFICATIONS	U.S. MEASURE	METRIC MEASURE
Pressure Range	500 – 3000 psi	35 – 207 bar
Maximum Injection Rate	12 gph	45.4 lph
RPM Range	300 – 1800 rpm	300 – 1800 rpm
Maximum Liquid Temp.	130°F	54°C
Inlet Port	1/4" Hose Barb	1/4" Hose Barb
Discharge Port	1/8" NPT(F)	1/8" NPT(F)
Weight	2.9 lbs.	1.32 kg
Dimensions	5" x 2"	127 x 51 mm

Note: Maximum inlet pressure for drive pump is 20 psi

MAXIMUM INJECTION RATE			
PUMP RPM	INJECTION RATE	PUMP RPM	INJECTION RATE
1000	5.5 gph	1500	10.0 gph
1100	7.0 gph	1600	10.5 gph
1200	8.0 gph	1700	10.5 gph
1300	9.0 gph	1800	10.5 gph
1400	9.5 gph		

MAXIMUM INJECTION RATE			
PUMP RPM	INJECTION RATE	PUMP RPM	INJECTION RATE
500	5.0 gph	1000	10.0 gph
600	6.0 gph	1100	11.0 gph
700	7.0 gph	1200	12.0 gph
800	8.0 gph	1800	12.0 gph
900	9.0 gph		

INTERNAL DIAPHRAGM MATERIAL	
6340	6341
EPDM	FPM

INTERNAL O-RING & VALVE MATERIAL	
6350	6351
FPM O-Ring	FPM O-Ring
Acetal Inlet Valve	Stainless Steel Inlet Valve

Adapter Selection Chart

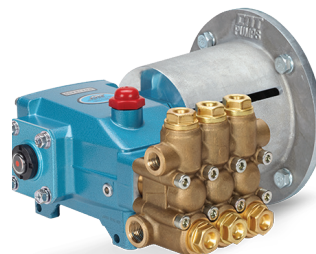
PUMP MODEL	6340 / 6341 ADAPTER	6350 / 6351 ADAPTER
335, 435	See Note	76400
3CP1120 – 1140, 310 – 350, 5CP2120W – 2150W	31227	76405
5CP3105 – 3160, 5CP5120 – 5140CSS	31233	76410
5CP6120 – 5CP6190, 530 – 550, 660, 1050, 7CP6110CSS – 6170	31232	76415
56, 60	31228	76626

Note: Hex nipple [1/2" NPT(M) x 1/4" NPT(M)] required for piston models 335 and 435.

Pump Selection Chart

DIRECT-DRIVE ELECTRIC

PUMP MODEL	PUMP FLOW GPM @ RATED RPM	6340 / 6341		6350 / 6351	
		MAXIMUM CHEMICAL %	MAXIMUM BAR PSI	MAXIMUM CHEMICAL %	MAXIMUM BAR PSI
3CP1130	2.4	7.3	138 2000	8.3	152 2200
5CP3110CSS	3.6	4.9	138 2000	5.6	207 3000
5CP2140WCS	4	4.4	138 2000	5.0	172 2500
5CP4120CSS	4.5	3.9	138 2000	4.4	207 3000
5CP2150W	5	3.5	138 2000	4.0	207 3000
5CP5120CSS	6	2.9	138 2000	3.3	207 3000
5CP5140CSS	6.4	2.7	138 2000	3.1	207 3000
5CP6120	7.4	2.4	83 1200	2.7	83 1200
56	8	2.2	138 2000	2.5	172 2500
5CP6190	10	1.8	69 1000	2.0	69 1000



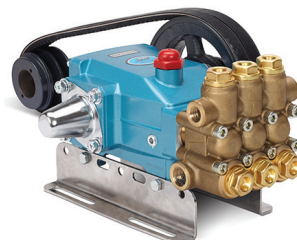
DIRECT-DRIVE ENGINE, GEARBOX

PUMP MODEL	PUMP FLOW GPM @ RATED RPM	6340 / 6341		6350 / 6351	
		MAXIMUM CHEMICAL %	MAXIMUM BAR PSI	MAXIMUM CHEMICAL %	MAXIMUM BAR PSI
3CP1120G	3.5	5.0	138 2000	5.7	152 2200
5CP3160CSSG1	4	4.4	138 2000	5.0	207 3000
5CP3150CSSG1	5	3.5	138 2000	4.0	207 3000
5CP5140CSSG1	6.2	2.8	138 2000	3.2	207 3000
5CP6120CSSG1	7.2	2.4	103 1500	2.8	103 1500
56G1	8	2.2	138 2000	2.5	172 2500
5CP6190G1	9.7	1.8	69 1000	2.1	69 1000
7CP6160CSG1	10	1.8	138 2000	2.0	172 2500
7CP6170G1	12	1.5	124 1800	1.7	124 1800



BELT-DRIVE, MOTOR OR ENGINE

PUMP MODEL	PUMP FLOW GPM @ RATED RPM	6340 / 6341		6350 / 6351	
		MAXIMUM CHEMICAL %	MAXIMUM BAR PSI	MAXIMUM CHEMICAL %	MAXIMUM BAR PSI
3CP1130	2.4	7.3	138 2000	8.3	152 2200
5CP3110CSS	3.6	4.9	138 2000	5.6	207 3000
5CP2140WCS	4	4.4	138 2000	5.0	172 2500
5CP3120	4.5	3.9	138 2000	4.4	207 3000
5CP2150W	5	3.5	138 2000	4.0	207 3000
5CP3150CSS	5.2	3.4	138 2000	3.3	207 3000
5CP5140CSS	6.4	2.7	138 2000	3.1	207 3000
5CP6120	7.4	2.4	83 1200	2.7	83 1200
56	8	2.2	138 2000	2.5	172 2500
5CP6190	10	1.8	69 1000	2.0	69 1000
660	10	1.8	138 2000	2.0	207 3000
7CP6160CS	10.6	1.7	138 2000	1.9	172 2500



Note: 6340 / 6341 chemical injection rate at 1750 rpm is 10.5 gallons/hour or 0.18 gallons/minute
6350 / 6351 chemical injection rate at 1750 rpm is 12 gallons/hour or 0.20 gallons/minute

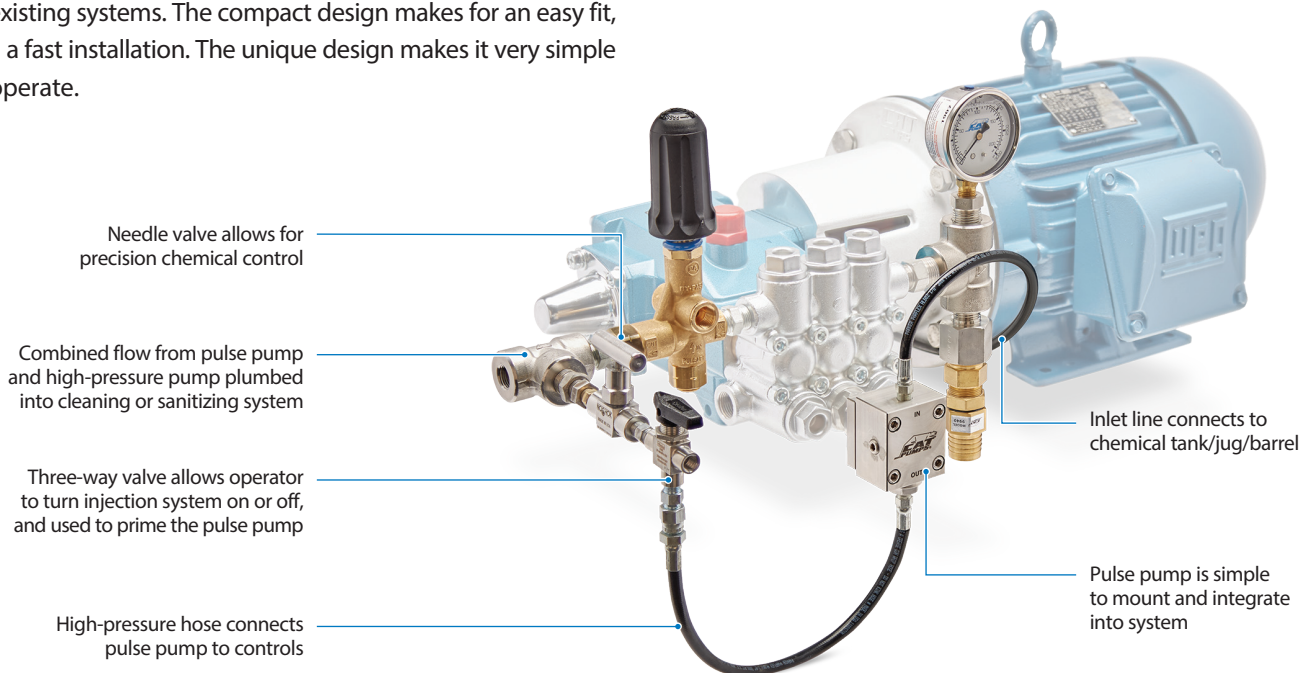
Chemical injection rates are adjustable from max injection rate down to under 1%

Refer to Pulse Pump data sheets for additional information on injection rates.

Pulse Pump Plumbing

Simple system integration and operation.

Cat Pumps pulse pump injectors are easy to install on new or existing systems. The compact design makes for an easy fit, and a fast installation. The unique design makes it very simple to operate.



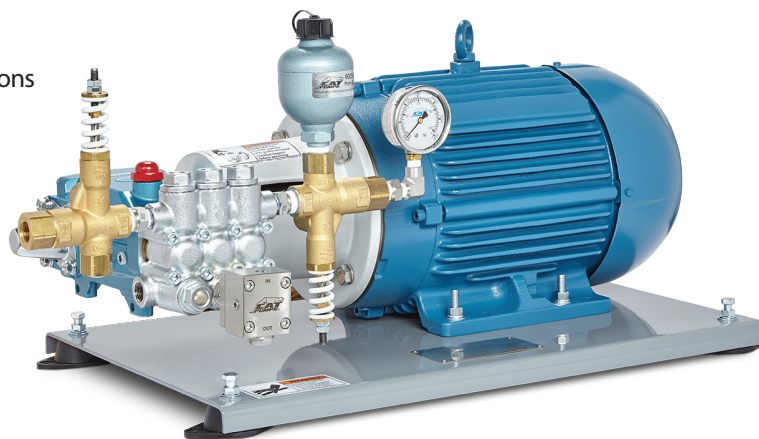
Custom-Engineered Power Units

You define. We design.

Cat Pumps also offers custom-engineered systems (power units) that are designed to meet your requirements. All units are factory flow and pressure tested before shipment. Complete our online Power Unit Quote Form online or call for a quote. See catpumps.com.

Design Features:

- Electric, gas, diesel, hydraulic and pneumatic drive options
- Heavy-duty construction
- Compact, streamline design
- Various control options to meet application needs
- Stationary or portable design
- Corrosion-resistant options
- System accessories



CAT PUMPS (U.K.) LTD.

1 FLEET BUSINESS PARK, SANDY LANE, CHURCH CROOKHAM
FLEET, HAMPSHIRE GU52 8BF, ENGLAND

P: +44 (0)1252 622031 • F: +44 (0)1252 626655

sales@catpumps.co.uk • technical@catpumps.co.uk • www.catpumps.co.uk

For International inquiries go to www.catpumps.co.uk and navigate to the "Contact Us" link.

©2020 Cat Pumps Inc. All rights reserved. All written and visual data contained in this document are based on the latest product information available at the time of publication. Cat Pumps reserves the right to make changes at any time without notice. All other brand names or marks are used for identification purposes and are trademarks of their respective owners.