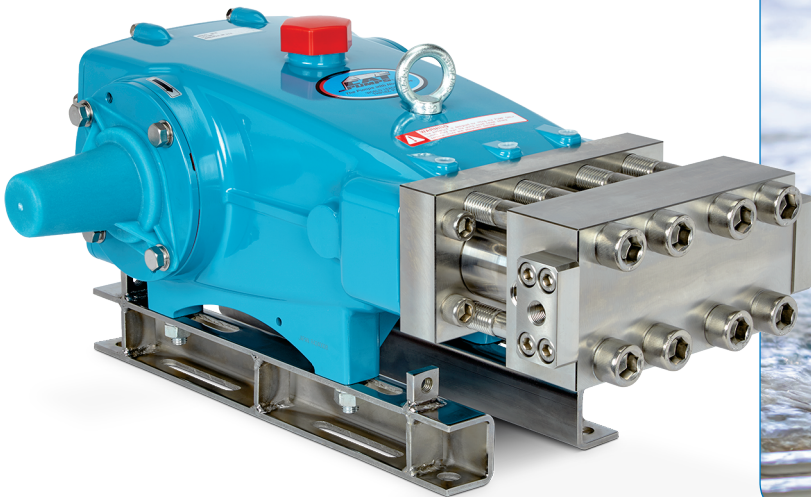


MODEL 3810 PLUNGER PUMP



22.7 lpm | 689 bar

Tested and Proven 689 Bar Performance

High-pressure systems operating up to 689 bar place extreme demands on system components, where pressure intensification and cyclic loading exploit any design or manufacturing defects. The Cat Pumps Model 3810 is engineered to exceed those demands, delivering dependable performance up to 22.7 lpm and 689 bar for demanding industrial applications.

Positioned between the proven Model 1810 (11.4 lpm) and Model 6810 (37.8 lpm), the 3810 expands the Cat Pumps 689 bar line-up with a new flow option built on proven design principles. A newly developed block-style stainless steel manifold provides the strength required for sustained high-pressure operation, while Cat Pumps drive-end and sealing technologies support long service life.

The Model 3810 has been rigorously tested in Cat Pumps' laboratory for thousands of hours to validate performance and durability.

When high pressure is critical, make it Cat Pumps.

Features:

- Block-style 304 stainless steel manifolds deliver high structural strength and corrosion resistance for demanding industrial applications.
- PTFE and acetal packing assemblies provide added stability at high pressure while extending seal life.
- Matched connecting rods and oversized bearings increase load capacity and significantly extend bearing life.
- High-density, polished solid ceramic plungers provide a true wear surface for industry-leading seal performance.

Typical Applications

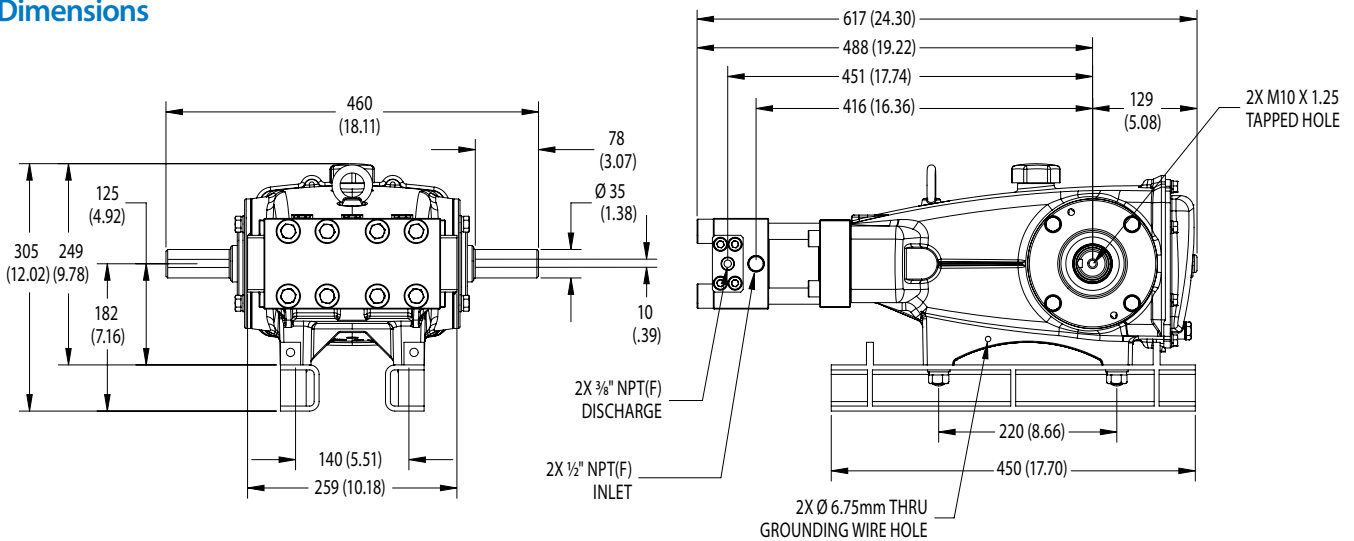
- Water Jet Cutting
- Hydrostatic Testing
- Chemical Injection
- High-Pressure Tooling
- Surface Prep/Tube Cleaning
- High-Pressure Washdown
- Heavy Equipment Cleaning
- Blow Off Preventer (BOP)
- Marine Barnacle Growth/ Paint Removal

Specifications

| | METRIC MEASURE | US MEASURE |
|-------------------------------|--------------------|-----------------------|
| Flow | 22.7 lpm | 6 gpm |
| Pressure Range | 6.9–689 bar | 100–10,000 psi |
| Pump RPM* | 870 rpm | 870 rpm |
| Inlet Pressure Range | Flooded to 4.8 bar | Flooded to 70 psi |
| Max Liquid Temperature | 60° C | 140° F |
| Inlet Ports (2) | ½" NPT(F) | ½" NPT(F) |
| Discharge Ports (2) | ¾" NPT(F) | ¾" NPT(F) |
| Shaft Diameter | 35 mm | 1.378" |
| Weight | 54 kg | 119 lbs |
| Dimensions | 617 x 460 x 248 mm | 24.30 x 18.11 x 9.78" |

*Pump minimum is 100 RPM

Dimensions



Popular Accessories



Pressure Regulator
PN 7720
1.9 – 37.8 lpm
138 – 689 bar



Pop-Off Valve
PN 9975
9.1 – 40.1 lpm
200 – 1,000 bar



Pressure Gauge
PN 6081
0 – 1,379 bar



Pulsation Dampener
PN 6032
Up to 37.8 lpm
0 – 689 bar



Crankcase Oil
PN 6133
4 Litres
Specially-Formulated
for Extended Protection

Contact Cat Pumps for more information at sales@catpumps.co.uk or +44 (0)1252 622031.



CAT PUMPS (U.K.) LTD.
1 FLEET BUSINESS PARK, SANDY LANE, CHURCH CROOKHAM
FLEET, HAMPSHIRE GU52 8BF, ENGLAND
P: +44 (0)1252 622031
sales@catpumps.co.uk | www.catpumps.co.uk

For International inquiries go to www.catpumps.co.uk and navigate to the “Contact Us” link.

©2026 Cat Pumps Corporation. All rights reserved. All written and visual data contained in this document are based on the latest product information available at the time of publication. Cat Pumps reserves the right to make changes at any time without notice. All other brand names or marks are used for identification purposes and are trademarks of their respective owners.