

# Filter Press Cloth Wash Pumps



**High Pressure pumps  
for automatic cleaning  
of filter-press cloth.**

*Cat Pumps wash modules produce a steady supply of high pressure water to feed an automatic cloth washer, which quickly restores your press to maximum efficiency.*

*The combination of a high quality pump, good design and careful selection of components provide a reliable and effective washing system.*

### **Specifications available:**

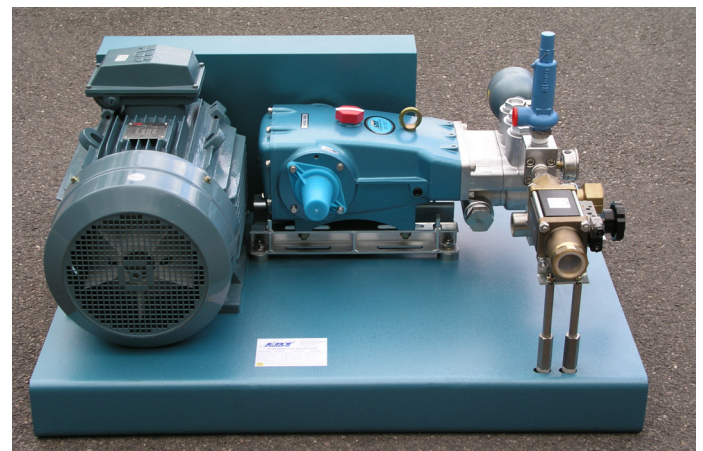
Volume Flow Rate up to 420 l/min  
Working Pressure from 50 to 85 bar  
Optional feed tank 500 to 1500 litres

Cat Pumps cloth wash modules are custom-built to suit each individual application and include all components necessary, fully assembled and tested prior to despatch.

*The standard specification can be enhanced with optional extras and the addition of accessories to meet your precise needs.*

*Other configurations of High Pressure Pumps and Systems available for:*

- *Factory, site and equipment wash-down*
- *Reverse osmosis including Desalination*
- *Tank, vessel and vehicle cleaning etc.*



*“Customer confidence is our greatest asset”*

## Performance Options

Flow l/min	Flow m <sup>3</sup> /hr	Pressure bar	Power kW	Motor kW	Tank litres	Pump Model	Tank Inlet	Outlet Connect
140	8.2	65	17.5	18.5	500	3545	1"	1"
180	10.8	50	17.3	22	800	3545.E55	1½"	1"
180	10.8	70	24.2	30	800	3545.E55	1½"	1"
210	12.5	50	20.2	22	800	3545.E55	1½"	1"
210	12.5	70	28.3	35	800	3545.E55	1½"	1½"
270	16.2	50	26.0	30	800	6760	1½"	1½"
370	22.1	50	35.6	37	1500	3545.E55x2	1½"	1½"

As each system is built to order, other performance points are available.

Cat Pumps cloth-wash modules are designed for intermittent cleaning duty cycles.

If you require a high pressure pump for an application that requires intensive utilisation or continuous running, please ask.

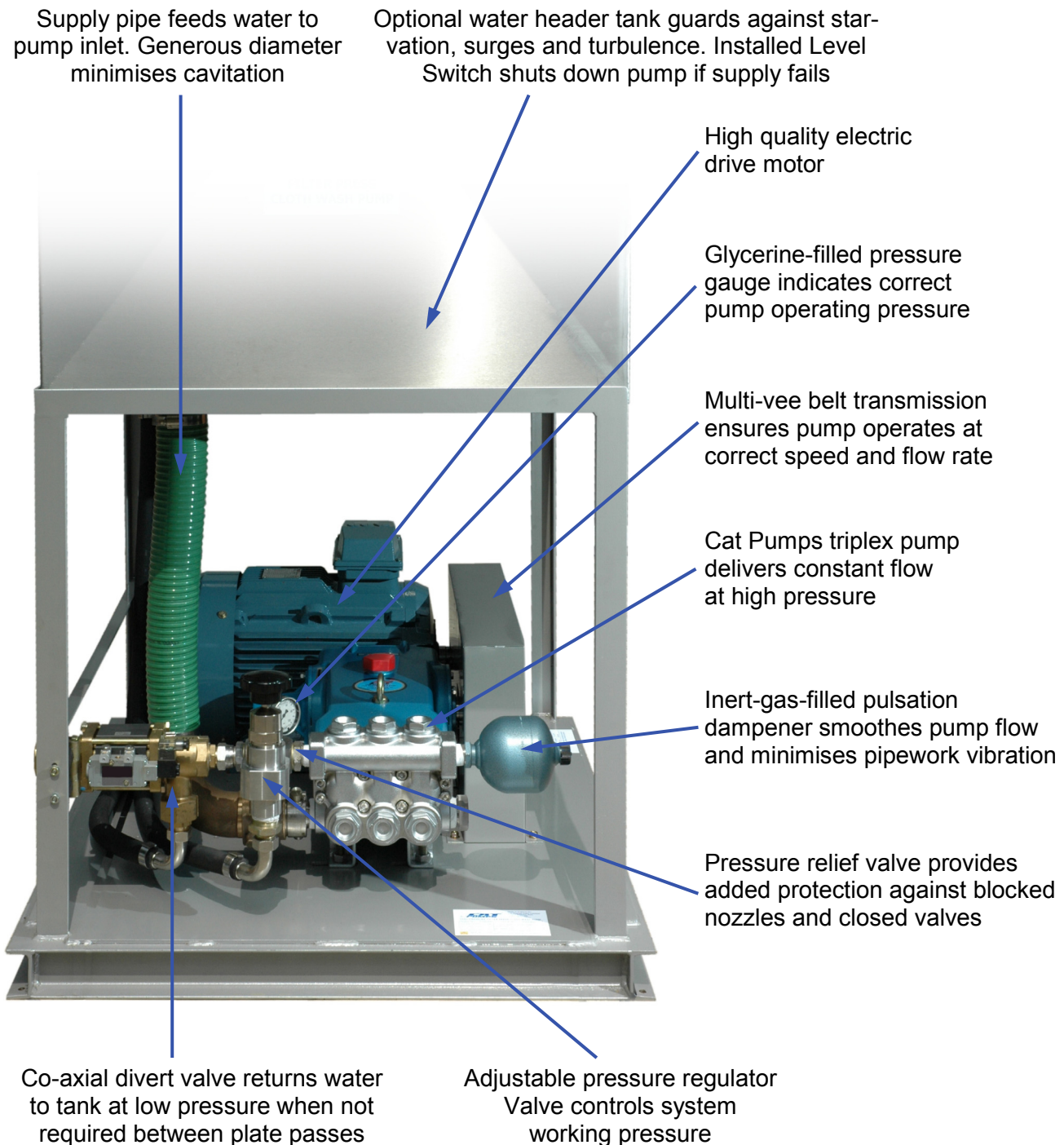
### INSTALLATION INSTRUCTIONS

**These simple instructions are provided for guidance only to assist with planning the installation of your High Pressure Pump module. Full safety, installation and operating instructions are provided on delivery.**

- 1) The module should be positioned on a firm, level base. Allow space around the unit for access and ventilation. Secure using suitable anchor bolts.
- 2) If the unit has been ordered complete with an integral header tank, connect a supply of water to the inlet of the tank ball-cock. The feed water intake flow should equal or exceed the pump flow rate and must be either clean mains water, or water pre-filtered to 10µ maximum particle size.
- 3) If the equipment ordered does not include a header tank, a suitable tank should be installed:
  - The tank capacity should be at least 4 times the pump flow rate in litres per minute
  - The tank should be mounted as high as possible above the pump and must have internal baffles fitted.
  - The inlet pipe from the tank to the pump should be as short and straight as possible and of adequate diameter to avoid starving the pump.
  - The return hoses from the regulator valve and divert valves must be also connected to the tank.
- 4) A low-water-level switch fitted to the tank should be interconnected to the motor starter or control panel. It should be wired to switch off the pump if the water level in the tank falls below the minimum level.
- 5) The discharge outlet port from the unit must be connected to the filter press automatic wash system using a suitable high-pressure flexible hose to allow for movement and vibration. The diameter of this hose must be at least as large as the unit outlet connection size.
- 6) The divert valve requires a supply of compressed air and also a pilot signal from the control panel. The divert valve is supplied in NC (normally closed) configuration and will divert water back to the tank when not energised. Energise the pilot valve to open the divert valve, which will then direct water to the automatic cloth washer.

If you are unsure about any of the above requirements, please consult your normal supplier of Cat Pumps products.

## Typical system components

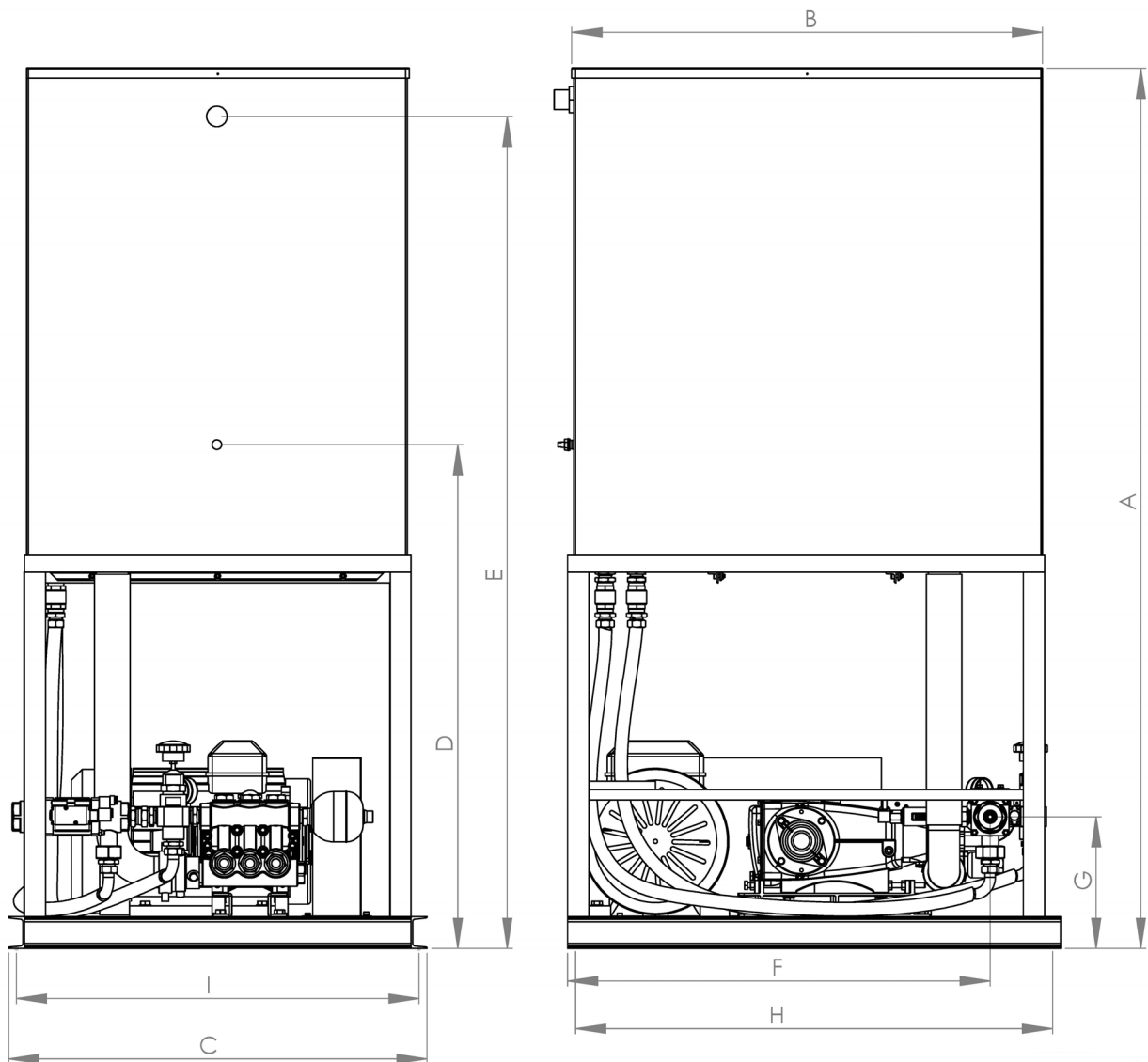


Cat Pumps cloth-wash modules use only genuine Cat Pumps brand high pressure pumps with their renowned reputation for quality, reliability and unsurpassed after-sales service.

Cat Pumps has been supplying and manufacturing positive displacement pumps for over 40 years and is a specialist in high pressure pumps, components and systems.

Field support, service and spare parts are available around the world.





Flow l/min	Pressure bar	A cm	B cm	C cm	D cm	E cm	F cm	G cm	H cm	I cm
140	65	195	120	110	145	190	100	38	100	81
180	50	210	120	100	120	200	100	32	114	96
180	70	210	120	100	120	200	100	32	114	96
210	50	210	120	100	120	200	100	32	114	96
210	70	210	120	100	120	200	100	32	114	96
270	50	210	150	95	115	190	135	47	134	76
370	50	210	140	140	135	200	125	27	100	136

As each system is built to order, other performance points are available

## World Headquarters Cat Pumps

1681-94th Lane. N.E. Minneapolis, MN 55449 - 4324  
Phone (763) 780-5440—FAX (763) 780-2958

E-mail: sales@catpumps.com

www.catpumps.com

### International Inquiries

FAX (763) 785-4329

E-mail: intsales@catpumps.com



## Cat Pumps (U.K.) Limited

1 Fleet Business Park, Sandy Lane, Church Crookham  
FLEET, Hampshire, GU52 8BF, England  
Phone 01252 622031 - Fax 01252 626655  
E-mail: sales@catpumps.co.uk www.catpumps.co.uk

## N.V. Cat Pumps International S.A.

Heiveldekens 6A, 2550 Kontich, Belgium  
Phone +32 3-450.71.50 - Fax +32 3-450.71.51  
E-mail: cpi@catpumps.be www.catpumps.be

## Cat Pumps Deutschland GmbH

Buchwiese 2, D-65510 Idstein, Germany  
Phone +49 6126/9303-0 Fax +49 6126/9303-33  
E-mail: catpumps@t-online.de www.catpumps.de